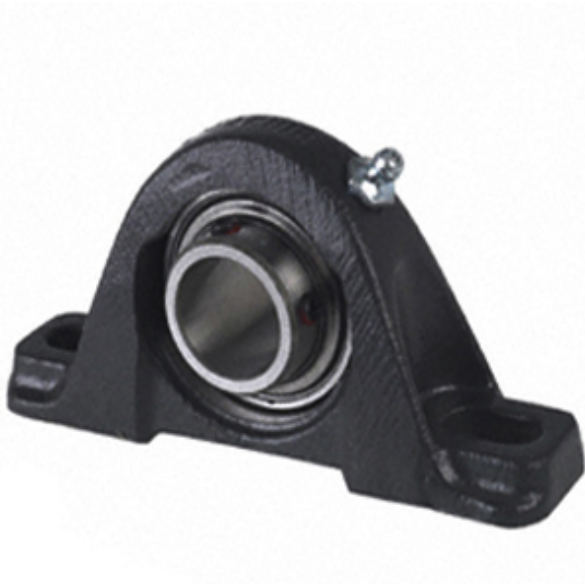




NTN Bearing Driveshaft do Brasil



1.575 Inch | 40 Millimeter x 1.937 Inch | 49.2 Millimeter x 1.937 Inch | 49.2 Millimeter TIMKEN YAK 40 SGT Pillow Block Bearings

Bearing No. YAK 40 SGT

YAK 40 SGT Bearing 2D drawings and 3D CAD models

Category	Pillow Block Bearings
Inventory	8.0
Manufacturer Name	TIMKEN
Minimum Buy Quantity	N/A
Weight	2.528
EAN	0087796265318
Product Group	M06110
Number of Mounting Holes	2
Mounting Method	Set Screw
Housing Style	2 Bolt Pillow Block
Rolling Element	Ball Bearing
Housing Material	Cast Iron
Expansion / Non-expansion	Non-expansion
Mounting Bolts	12 Millimeter
Relubricatable	Yes
Insert Part Number	GYE40KRRB
Seals	Double Land Riding Rubber Contact
Housing Configuration	1 Piece Solid
Inch - Metric	Metric
Other Features	Single Row Spherical Normal Duty Low Base Black Housing Powder Coated Epoxy Finish
Long Description	2 Bolt Pillow Block; 40MM Bore; 49.2MM Base to



NTN Bearing Driveshaft do Brasil

	Center Height; Set Screw Mount; Ball Bearing; 110.3MM Minimum Bolt Spacing; 162.7MM Bolt Spacing Maximum; Relubricatable; Cast Iron; Double Land Riding R
Category	Pillow Block
UNSPSC	31171511
Harmonized Tariff Code	8483.20.40.40
Noun	Bearing
Keyword String	Pillow Block
Manufacturer URL	http://www.timken.com
Manufacturer Item Number	YAK 40 SGT
Weight / LBS	5.569
Nominal Bolt Center to Center	5.4 Inch 136 Millimeter
B	1.937 Inch 49.2 Millimeter
Bolt Spacing Maximum	6.406 Inch 162.7Millimeter
D	1.937 Inch 49.2 Millimeter
Actual Bolt Center to Center	0 Inch 0Millimeter
d	1.575 Inch 40 Millimeter
Bolt Spacing Minimum	4.343 Inch 110.3Millimeter
Shaft Size d	1.575 in
Bearing Type	Ball Bearing
Inside Ring Outside Diameter	2.058 in
Dimension T	1.016 in
Dimension D1	2.059 in
Series	Industrial
Weight	5.459 lb
Seal Type	Shroud Seal
Base to Center Height H	49.21 mm
Total Length L	179.4 mm



NTN Bearing Driveshaft do Brasil

Total Width A	2.031 in
Bolt Hole Spacing J	136.5 mm
Bolt Hole Width N	14.3 mm
Bolt Hole Length N1	26.2 mm
Foot Height H1	19.1 mm
Total Height H2	101.6 mm
Dimension L1	59.8 mm
Inside Ring Width B	=Bearings1_Inside Ring Width= mm
Center of Bearing from End S	19 mm
Dimension B1	1.937 in
Static Load Rating	4460 lbf
Dynamic Load Rating	8130 lbf