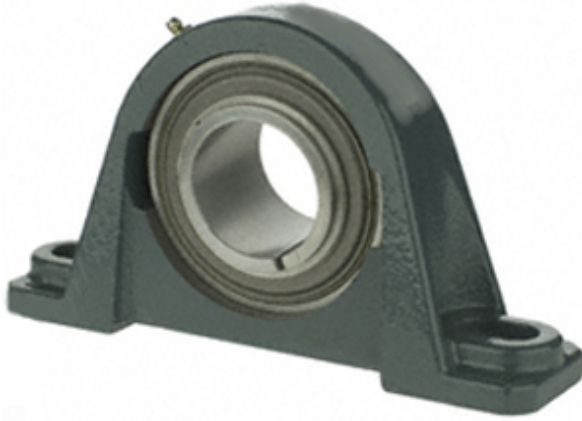




# NTN Bearing Driveshaft do Brasil

1.438 Inch | 36.525 Millimeter x 1.844 Inch |  
46.838 Millimeter x 2.125 Inch | 53.98 Millimeter  
DODGE P2B-GTMAH-107 Pillow Block Bearings



Bearing No. P2B-GTMAH-107

P2B-GTMAH-107 Bearing 2D drawings and 3D CAD models

Category	Pillow Block Bearings
Inventory	2.0
Manufacturer Name	ABB MOTORS AND MECHANICAL INC
Minimum Buy Quantity	N/A
Weight	2.272
EAN	0782475880454
Product Group	M06110
Number of Mounting Holes	2
Mounting Method	Tapered Adapter Sleeve
Housing Style	2 Bolt Pillow Block
Rolling Element	Ball Bearing
Housing Material	Cast Iron
Expansion / Non-expansion	Non-expansion
Mounting Bolts	1/2 Inch
Relubricatable	Yes
Insert Part Number	INS-GTM-107
Seals	Single Lip Contact
Housing Configuration	1 Piece Solid
Inch - Metric	Inch
Other Features	Single Row   Medium Duty   Air Handling   Wide Inner Race   Thin Wall
Long Description	2 Bolt Pillow Block; 1-7/16" Bore; 2-1/8" Base to Center Height; Tapered Adapter



## NTN Bearing Driveshaft do Brasil

	Sleeve Mount; Ball Bearing; 5-3/16" Minimum Bolt Spacing; 5-7/8" Bolt Spacing Maximum; Relubricatab
Category	Pillow Block
UNSPSC	31171511
Harmonized Tariff Code	8483.20.40.40
Noun	Bearing
Keyword String	Pillow Block
Manufacturer URL	<a href="http://www.dodge-pt.com">http://www.dodge-pt.com</a>
Manufacturer Item Number	P2B-GTMAH-107
Manufacturer Internal Number	129236
Weight / LBS	7.2
B	2.125 Inch   53.98 Millimeter
Bolt Spacing Maximum	5.875 Inch   149.225Millimeter
Actual Bolt Center to Center	0 Inch   0Millimeter
Bolt Spacing Minimum	5.188 Inch   131.775Millimeter
Nominal Bolt Center to Center	5.5 Inch   140 Millimeter
D	1.844 Inch   46.838 Millimeter
d	1.438 Inch   36.525 Millimeter